



INSTRUCTION BULLETIN

No. 340532
Machine: 5700/5700XP
Published: 5-02
Rev. 00

NOTE: DO NOT DISCARD the Parts List from the Instruction Bulletin. Place the Parts List in the appropriate place in your machine manual for future reference. Retaining the Parts List will make it easier to reorder individual parts and will save you the cost of ordering an entire kit.

NOTE: Numbers in parenthesis () are reference numbers for parts listed in Bill of Materials.

Installation instructions for **kit number 374161**

DESCRIPTION:

This kit contains the parts needed to install a spring assisted roller kit on the models 5700 and 5700XP cylindrical head scrubbers.

Please follow step-by-step instructions.

SPECIAL TOOLS / CONSIDERATIONS: None

(Estimated time to complete: 0.5 hour)

PREPARATION:

1. Check that the machine's solution tank is empty.
2. Stop the machine on a clean level surface and lower the scrub head.
3. Turn the machine power off and set the parking brake (option).

FOR SAFETY: Before leaving or servicing machine, stop on level surface and set parking brake. Then turn off machine and remove key.

4. Raise the solution tank/cover and secure into place with the solution tank support rod.
5. Remove and set aside the front cover and front cover mounting hardware.

INSTALLATION:

(Refer to FIG. 1 and 2)

1. Remove the cotter pin, four inch roller and clevis pin from the pivot and roller bracket.

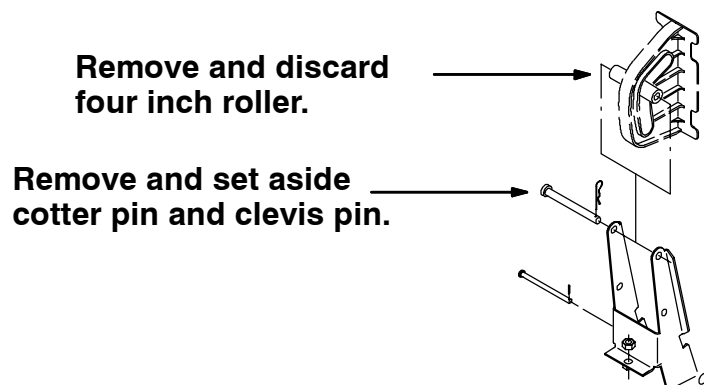


FIG. 1 - Remove Old Roller

2. Install the new rubber roller (1) in the roller bracket, in place of the old four inch tube.
(Refer to FIG. 2)
3. Reinstall the clevis pin through the new roller and roller bracket with a washer (2) and compression spring (3) on each side of the roller bracket. The washers should be oriented on either side of the roller bracket, with the springs on the outside of the washers, when properly installed. (Refer to FIG. 2)
4. Reinstall the cotter pin in the end of the clevis pin to secure the assembly. (Refer to FIG. 2)
5. Lower the solution tank and turn the machine power on. Raise the scrub head and check the roller for proper operation.
6. Replace the machine's front cover.

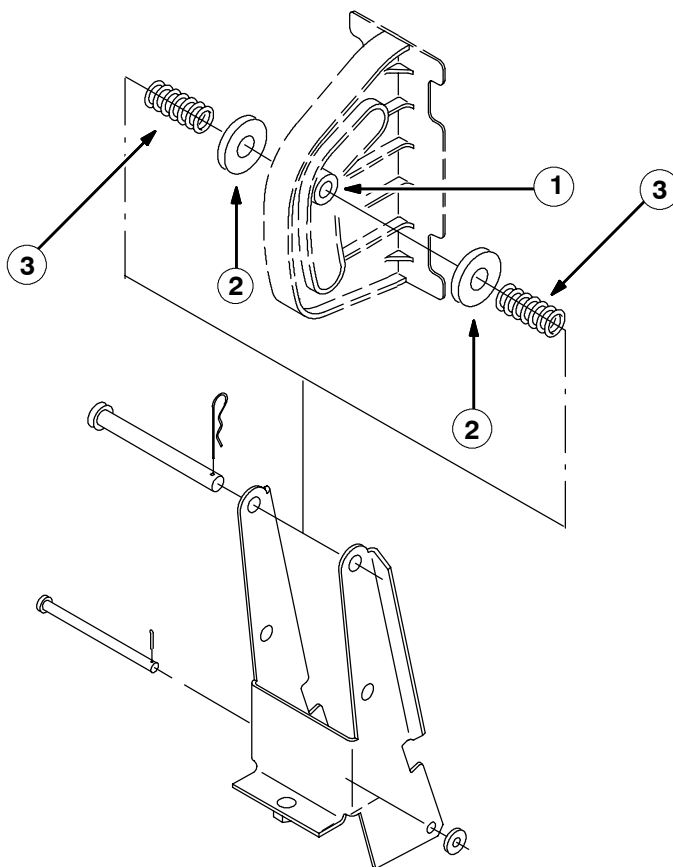


FIG. 2 - New Roller Installation

BILL OF MATERIALS FOR SPRING/ROLLER KIT 374161

Ref.	TENNANT Part No.	Description	Qty.
1	374162	Roller, rwk	1
2	51564	Washer, 0.53B 1.75D,	2
3	397255	Spring, cmpr, 0.85OD, 0.08 wir, 2.0L	2

TENNANT COMPANY
P. O. Box 1452
Minneapolis, MN 55440-1452